



Round Die



Oval Die

## CH-60D

- ◆ C-shaped designed, the cylinder and the body are firmly, integrally molded of forged alloy steel, which possesses both high compression and tension.
- ◆ Light, portable, easy to place. Can precisely punch with few burrs.
- ◆ Applicable to angle steels, copper, aluminum, iron plate, H beams, and all other U-iron.
- ◆ Depth: 70mm. The max. punching capacity: Copper and aluminum plate - D20.5x12mm; Iron plate - D20.5x10mm.
- ◆ Need to coordinate with hydraulic pump (power pump: CTE-25AS, hand pump: CP-700, or foot pump: CFP-800).
- ◆ Able to customize dies in any sizes.

**PS: We also offer an oval (rectangular-hole) die for this tool.**



Round Die



Oval Die

## CH-70

- ◆ C-shaped designed, is firmly, integrally molded with cast iron.
- ◆ Portable, easy to place. Can precisely punch with few burrs.
- ◆ Applicable to angle steels, copper, aluminum, iron plate, H beams, and all other U-iron.
- ◆ Depth: 80mm. The max. punching capacity: Copper and aluminum - D20.5x12mm; Iron - D20.5x10mm.
- ◆ Need to coordinate with hydraulic pump (power pump: CTE-25AS, hand pump: CP-700, or foot pump: CFP-800).
- ◆ Able to customize dies in any sizes.

**PS: We also offer an oval (rectangular-hole) die for this tool.**

Item	Output (TON)	Depth (mm)	Max. Punching Thickness (mm)	Standard Die (mm)	Weight (kg)
CH-60D	31	70	Copper, Aluminum 12 , Iron 8	3/8"(10.5), 1/2"(13.8), 5/8"(17), 3/4"(20.5)	16.5
CH-70	35	80	Copper, Aluminum 12 , Iron 8	3/8"(10.5), 1/2"(13.8), 5/8"(17), 3/4"(20.5)	31

CH-80

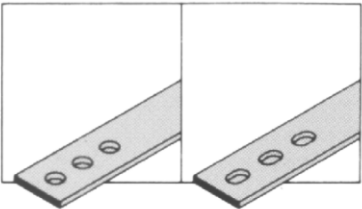
- ◆ C-shaped designed, is firmly, integrally molded with cast iron.
- ◆ Large-tonnage, powerful punching capacity. Dual-action designed, which accelerates punching time, also increases efficiency.
- ◆ Applicable to angle steels, copper, aluminum, iron plate, H beams, and all other U-iron.
- ◆ Depth: 120mm. The max. punching capacity:  
Copper and aluminum - D25x20mm; Iron - D25x19mm;  
Stainless steel - D25x6mm.
- ◆ Need to coordinate with hydraulic pump (power pump: CTE-25AD, hand pump: CP-700-2A-D, or foot pump: CFP-800-1-D).
- ◆ Able to customize dies in any sizes.

**PS: If requiring for an oval-hold (rectangular-hole), please notify while you are purchasing, the body design needs to be changed.**

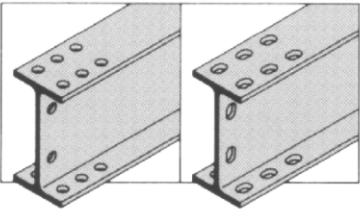


Round Die

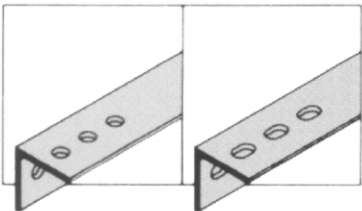
Steel plate



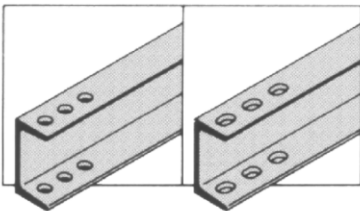
H beam



Angle steel



C channel



Item	Output (TON)	Depth (mm)	Max. Punching Thickness (mm)	Standard Die (mm)	Weight (kg)
CH-80	50	120	Copper, Aluminum 20, Iron 19 , Stainless Steel 6	D16,D18,D22,D25	39.5



Die

## CH-13

- ◆ Light, portable. A special designed tool for C channel steels.
- ◆ Applicable to C channel steels, iron plates, stainless steel plates, and angle steels.
- ◆ The max. punching capacity: Iron - D13x3mm; Stainless steel – D13x1.2mm.
- ◆ Need to coordinate with hydraulic pump (power pump: CTE-25AS, hand pump: CP-700, or foot pump: CFP-800).
- ◆ Able to customize dies in any sizes.

## CH-50

- ◆ Light, portable. A special designed tool for C channel steels.
- ◆ Applicable to C channel steels, iron plates, stainless steel plates, and angle steels.
- ◆ The max. punching capacity: Iron - D13x5mm; Stainless steel – D13x3mm.
- ◆ Need to coordinate with hydraulic pump (power pump: CTE-25AS, hand pump: CP-700, or foot pump: CFP-800).
- ◆ Able to customize dies in any sizes.



Die

Item	Output (TON)	Depth (mm)	Max. Punching Thickness (mm)	Standard Die (mm)	Weight (kg)
CH-13	6.8	22	Iron 3 , Stainless Steel 1.2	D7,D10,D13	3.5
CH-50	16	70	Iron 5 , Stainless Steel 3	D7,D10,D13	12



Quadrilateral Die

### CC-104I

- ◆ Applicable to electricity controlling boxes, switchboards, sheet metals, or modifying or adding additional holes.
- ◆ Fast punching without any burrs, notches, nor sparks, which improves the appearance and increases the value of the product.
- ◆ Light, portable, easily changing dies.
- ◆ The max. punching capacity: Iron – D60.8(2")x3mm; Stainless steel – D60.8(2")x1.2mm.
- ◆ Need to coordinate with hydraulic pump (power pump: CTE-25AS, hand pump: CP-700, or foot pump: CFP-800).
- ◆ Able to customize dies in any sizes.

**PS: We also customize squared-die, rectangle-die, as well as special material die, such as for 2mm stainless steel.**

### CC-104II

- ◆ Applicable to electricity controlling boxes, switchboards, sheet metals, or modifying or adding additional holes.
- ◆ Fast punching without any burrs, notches, nor sparks, which improves the appearance and increases the value of the product.
- ◆ Light, portable, easily changing dies.
- ◆ The max. punching capacity: Iron – D115.3(4")x3mm; Stainless steel – D115.3(4")x1.2mm.
- ◆ Need to coordinate with hydraulic pump (power pump: CTE-25AS, hand pump: CP-700, or foot pump: CFP-800).
- ◆ Able to customize dies in any sizes.



Item	Output (TON)	Max. Punching Thickness (mm)	Standard Die (mm)	Weight (kg)
CC-104I	12	Iron 3 , Stainless Steel 1.2	1/2"(22), 3/4"(27.5), 1"(34.3), 1 11/4"(43), 1 1/2"(49), 2"(60.8)	6.4
CC-104II	—	Iron 3 , Stainless Steel 1.2	2 1/2"(76.6), 3"(89.4), 3 1/2"(102.6), 4"(115.3)	10.8





## CC-104III

## E.M.T Pipe Hydraulic Punching Tool

- ◆ Applicable to change the sizes of the hole for the thin electric wire, or modifying or adding additional holes.
- ◆ Fast punching without any burrs, notches, nor sparks, which improves the appearance and increases the value of the product.
- ◆ Light, portable, easily changing dies.
- ◆ Die formats: D19, D25, D31, D39, D51, D63, and D75mm.
- ◆ The max. punching capacity: Iron – D75x3mm; Stainless steel – D75x1.2mm.
- ◆ Need to coordinate with hydraulic pump (CP-180).

## CC-104RW

## Ratchet Punching Tool

- ◆ Starting with drilling a hole on the switchboard, then make the axis through the hole, matching the needed die size, and finishing with putting on the adjustable ratchet wrench, then rotate it.
- ◆ Fast punching without any burrs, notches, nor sparks, which improves the appearance and increases the value of the product.
- ◆ Saving effort, easily changing dies, light, portable, no need to coordinate with hydraulic pump or cylinder set.
- ◆ The max. punching capacity: Iron – D60.8(2")x3mm; Stainless steel – D60.8(2")x1.2mm.
- ◆ Able to customize molds in any sizes.



Item	Output (TON)	Max. Punching Thickness (mm)	Standard Die (mm)	Weight (kg)
CC-104III	12	Iron 3 , Stainless Steel 1.2	D19,D25,D31,D39, D51,D63,D75	8.3
CC-104RW	—	Iron 3 , Stainless Steel 1.2	1/2"(22),3/4"(27.5),1"(34.3), 1 1/4"(43),1 1/2"(49),2"(60.8)	3.7



## Hole Saw

- ◆ An alloy steel 3-knives compound cutter, which includes an external knife, a center knife, and an internal knife. Therefore, it has higher maintenance and lower chances of being broken or fallen apart.
- ◆ The extension edge of the head part has a resisting function that can use to avoid drilling too deep or too hard during the operation.
- ◆ Applicable to iron boards, stainless steel boards, aluminum boards, FRP boards, and plastic resin plastic boards, etc.
- ◆ Need to coordinate with driller or drill machine. The max. punching capacity using stainless steel board: 5mm.

Item	Diameter Die (mm)	Max. Drilling Capacity (mm)
How Saw	D14-D100	Stainless Steel 5, Iron 5
	D19-D55	Round Pipe 5

TC-33

## Magnetic Punching Tool

- ◆ A magnetic driller that is applicable to use in a small space. It has a strong magnetic attraction force, which makes sure to keep the tool from shaking, prevents the drill bit from damaged, and keeps the tool steady.
- ◆ Applicable to use in steel-constructural buildings, giant machine making/manufactures, auto/mobile industry, iron tower, and normal steel-made structures.
- ◆ The low-standby-power setting design is applicable to punching on high-hardness steel materials. This setting has extremely strong punching power.
- ◆ An outstanding function shows its stability and high maintenance, low error rate. Also the oil filler and the motor are built inside the tool body to prevent them from external bumping.
- ◆ The max. drilling capacity: Iron plate- D60x18-60 in depth.

**P.S.: We provide the tool dies in multiple sizes.**



Item	Power (Single-phase)	Set-Up Amp. (A)	Free Running Speed (R.P.M.)	Max. Drilling Capacity (mm)	Motor (w)	Magnet Size (mm)	Magnetic Force (Kg)	Weight (Kg)
WS-6025MT	100-120V AC 50HZ/60HZ	15	750/450	Iron plate: D60x18-60 in depth Iron plate T50	1850	210X100X64	22540N /2300Kgf	23
	220-240V AC 50HZ/60HZ	7.5						

This series of tools has smaller volume and lighter weight, which is convenient for the users to carry around and operate outside. This series is able to use on processes copper, aluminum, iron, and all types of busbars.



CWC-150

CWC-200

## Busbar Cutting Tool

- ◆ Applicable to manufacturing factories, on-off boxes, and switchboard auto-controlled industrial wiring work.
- ◆ The horizontal cutter design can avoid wasting material on extra busbar.
- ◆ The adjustable bolt helps preventing the busbar from tilted during cutting.
- ◆ The max. cutting capacity – CWC-150: 150x10mm (CWC-200: 150x10mm).
- ◆ Need to coordinate with hydraulic pump (power pump: CTE-25AS, hand pump: CP-700, or foot pump: CFP-800).

CWC-150V

CWC-200V

## V-Shaped Busbar Cutting Tool

- ◆ Applicable to manufacturing factories, on-off boxes, and switchboard auto-controlled industrial wiring work.
- ◆ The V-shaped cutter design makes the cutting side smoother by avoiding cutting notches.
- ◆ The max. cutting capacity – CWC-150V: 150x10mm (CWC-200V: 150x10mm).
- ◆ Need to coordinate with hydraulic pump (power pump: CTE-25AS, hand pump: CP-700, or foot pump: CFP-800).



Item	Output (TON)	Cutting Capacity (mm)	Weight (kg)
CWC-150	16	Copper, Aluminum 150x10m, Iron 150x6	26.5
CWC-200	35	Copper, Aluminum 200x10m, Iron 200x6	31.2
CWC-150V	20	Copper, Aluminum 150x10m, Iron 150x6	23
CWC-200V	20	Copper, Aluminum 200x10m, Iron 200x6	28.7



CB-150D

## Copper Plate Blending Tool

- ◆ Applicable to manufacturing factories, on-off boxes, and switchboard auto-controlled industrial wiring work.
- ◆ The liftable design of this tool can easily take out a busbar by taking away the tenon if the busbar is too long or in a bended N-shaped or C-shape.
- ◆ The horizontal placement design prevents the busbar from twisted and avoids products leaning one side by firmly supporting the bracket to keep it balanced while bending.
- ◆ Provides angle and scale for controlling the bending angle easily. The max. bending capacity is 150x10mm.
- ◆ Need to coordinate with hydraulic pump (power pump: CTE-25AS, hand pump: CP-700, or foot pump: CFP-800).

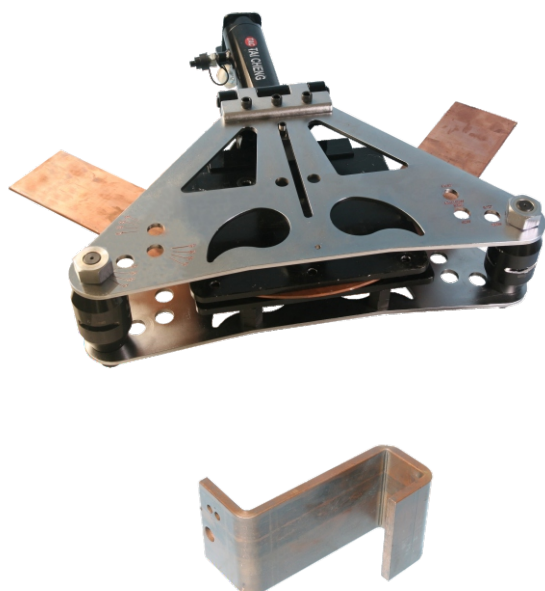
CB-200A

## Busbar Straight-Band Tool

- ◆ Applicable to manufacturing factories, on-off boxes, and switchboard auto-controlled industrial wiring work.
- ◆ The use of the axis in large-area-bending design prevents the busbar from twisted while bending.
- ◆ Provides angle and scale for controlling the bending angle easily. The max. bending capacity is 200x10mm.
- ◆ Need to coordinate with hydraulic pump (power pump: CTE-25AS, hand pump: CP-700, or foot pump: CFP-800).



Item	Output (TON)	Bending Capacity (mm)	Weight (kg)
CB-150D	16	Copper, Aluminum 150x10	17.7
CB-200A	16	Copper, Aluminum 200x10	24



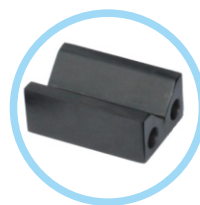
CB-125

CB-125D

## Two-In-One Vertical-Flat-Bending Tool

- ◆ Applicable to manufacturing factories, power plant, large on-off boxes, and switchboard auto-controlled industrial wiring work.
- ◆ Provides not only horizontal but vertical bending functions in one tool. Both dies are included for switching.
- ◆ While bending horizontally, the design of large-area-bending axis prevents Busbar from being torched or twisted. During a vertical bending, both upper and lower boards are pressed simultaneously to keep it flat and smooth, and protect the busbar from being twisted or depressed.
- ◆ Provides angle and scale for controlling the bending angle easily, can complete a bending at once. The max. bending capacity is 125x12.5mm.
- ◆ Need to coordinate with hydraulic pump (power pump: CTE-25AS, hand pump: CP-700, or foot pump: CFP-800).

**P.S.: CB-125D is a double-loop hydraulic cylinder, has faster speed while oil returning. It must coordinate with dual-circuit hydraulic pump.**



Item	Output (TON)	Bending Capacity (mm)	Weight (kg)
CB-125	20	Copper, Aluminum 125X12.5	43
CB-125D	27	Copper, Aluminum 125X12.5	43

Busbar Thickness (mm)	Busbar Width (mm)	Bending Angle	Bending Radius (mm)
6	40/50/60	90	140
8	80	90	140
8	100	90	140
10	80	90	160
10	100	90	160
10	125	90	160
12.5	125	90	160

**M-Series: A new design – improves the problem of overweight of the normal models; has nicer appearance, lighter body, easier for carrying, and many other advantages.**



MB-125

MB-150

## M-Series Busbar Flat-Bend Tool

- ◆ Applicable to manufacturing factories, on-off boxes, and switchboard auto-controlled industrial wiring work.
- ◆ The use of the axis in large-area-bending design prevents busbar from twisted while bending.
- ◆ Able to easily control bending angles. The max. bending capacity of MB-125 is 125x12.5mm (MB-150: 150x12.5mm).
- ◆ Need to coordinate with hydraulic pump (power pump: CTE-25AS, hand pump: CP-700, or foot pump: CFP-800).

Item	Output (TON)	Bending Capacity (mm)	Weight (kg)
MB-125	20	Copper, Aluminum 125X12.5	19.5
MB-150	20	Copper, Aluminum 150X12.5	21.5

MC-125V

## M-Series V-Shaped Busbar Cutting Tool

- ◆ Applicable to manufacturing factories, on-off boxes, and switchboard auto-controlled industrial wiring work.
- ◆ The V-shaped cutter design makes the cutting side smoother by avoiding cutting notches.
- ◆ The max. cutting capacity: 125x12.5mm).
- ◆ Need to coordinate with hydraulic pump (power pump: CTE-25AS, hand pump: CP-700, or foot pump: CFP-800).

Item	Output (TON)	Cutting Capacity (mm)	Weight (kg)
MC-125V	20	Copper, Aluminum 125x12.5	15.7







MP-125

## M-Series Busbar Punching Tool

- ◆ Applicable to punch on angle steels, iron plates, H beams, copper and aluminum busbar.
- ◆ Can punch precisely, easy to place, reduce burrs on a busbar.
- ◆ The max. punching capacity: Copper and aluminum busbar-D20.5x12.5mm, iron busbar-D20.5x8mm.
- ◆ Need to coordinate with hydraulic pump (power pump: CTE-25AS, hand pump: CP-700, or foot pump: CFP-800).
- ◆ Able to customize dies in any sizes.



Round Die



Oval Die

Item	Output (TON)	Punching Capacity (mm)	Weight (kg)
MP-125	20	Copper, Aluminum D20.5 x12.5/ Iron D20.5x8 Standard Die: 3/8", 1/2", 5/8", 3/4",	15.8

MAC-75

## Angle Steel Cutting Tool

- ◆ Design especially for cutting angle steels. Applicable to use in high-pressured electrical towers, bridges, and other angle steels.
- ◆ Speed cutting without noise, smooth on the cutting area, and easy to carry.
- ◆ The max. cutting capacity: 75x75.6mm.
- ◆ Need to coordinate with hydraulic pump (power pump: CTE-25AS, hand pump: CP-700, or foot pump: CFP-800).

Item	Output (TON)	Cutting Capacity (mm)	Weight (kg)
MAC-75	20	Angle Steel 75x75x6	19





CAC-110

## Large Angle Steel Cutting Tool

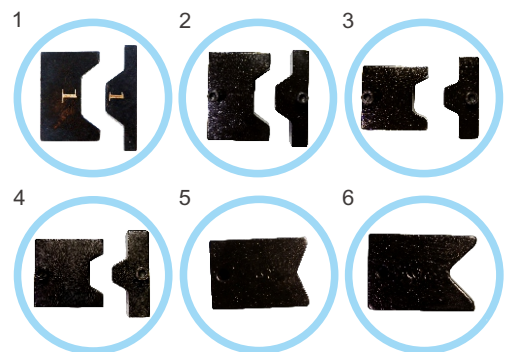
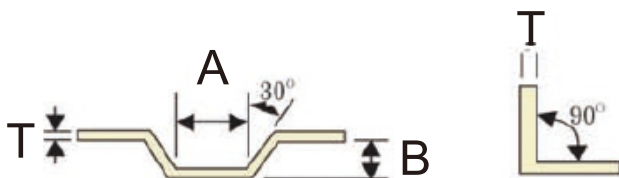
- ◆ Design especially for cutting angle steels. Applicable to use in high-pressured electrical towers, bridges, and other angle steels.
- ◆ Speed cutting without noise, smooth on the cutting area, and easy to carry.
- ◆ The max. cutting capacity: 110x110x10mm.
- ◆ Need to coordinate with hydraulic pump (power pump: CTE-25AS, hand pump: CP-700, or foot pump: CFP-800).

Item	Output (TON)	Cutting Capacity (mm)	Weight (kg)
CAC-110	30	Angle Steel 110x110x10	60

CBC-25

## Multifunctional Copper Bending & Terminal Compression Tool

- ◆ Has multifunction, including flattening or bending a copper board in to C shape or L-shape.
- ◆ Including dies for switching. For a copper board, the max. bending capacity: 30x5mm; the max. flattening capacity: 38mm<sup>2</sup>.
- ◆ Portable, simple to operate, and easy to carry.
- ◆ Need to coordinate with hydraulic pump (power pump: CTE-25AS, hand pump: CP-700, or foot pump: CFP-800).



Item	Output (TON)	Bending Capacity (mm)	Weight (kg)
CBC-25	7	Copper 30x5mm	6.5

No.	A	B	T(mm)
1	30	15	3-5
2	27	15	5
3	20	10	Under 3
4	16	10	5
5	—	—	3-5
6	Compression 10-50 mm <sup>2</sup>		

This is a multifunctional compound machine. Providing complete humanity features to prevent from wasting human resources. It is not only saving wages, but also according with a consistent working schedule. In application of high pressure in the small-scale transformers, switchgear, power distribution boxes, and other production lines and assembly spots, it can bring in to full play while modifying the usage.

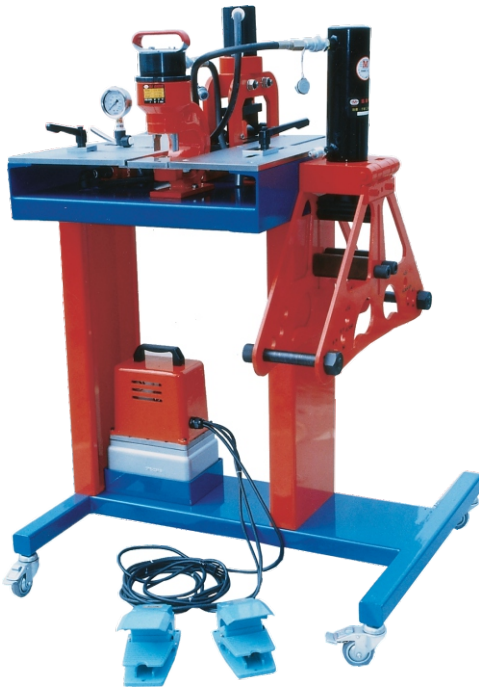
#### Features Description:

1. It is designed for working on an open platform. A grinded chrome mirror has treated on the surface, which is antirust and abraded resistant. The flat, steady platform supports the working busbar. It protects the workpiece from twisted or torched. The busbar is easy to put in and take out.
2. The working platform with foot standard sizes are available to measure .1000 kgf / cm<sup>2</sup> oil-filled fuel gauge device can display all kinds of machine tools pressure readings, to avoid overload protection
3. The adjustable design of the size control maintains the consistency of the workpieces. It is freely adjustable for the Quartet-three-valves to be switched at any time for all kinds of machine tools.
4. The slide-type design of copper material collecting groove and outlet helps copper scrap slide down naturally.
5. The foot-control switch improves work efficiency.
6. The 360 ° swivel casters allow the machine to be moved easily, have high mobility.

#### MPCB-301(Three in One)

- ◆ Contains three functions: punching, flat bending, and cutting busbar.
- ◆ **Punching:** punching precisely, fewer glitches, depth in 70mm. The max. punching capacity - copper and aluminum: D20.5x10mm, iron: D20.5x8mm.  
**Flat bending:** completes a 90-degree bending at once. Has an angle scale, which allows user to easily control and bend a wanted angle. The max. bending capacity: 200X10mm.
- ◆ **Cutting:** a V-type cutter makes the cutting edge smoother without a notch. The max. cutting capacity: 150x10mm.
- ◆ Contains an auto-hydraulic pump. The output is 700 kgf/cm<sup>2</sup> (10000psi).





### MPCB-401(Four in One)

- ◆ Contains four functions: punching, flat bending, vertical bending, and cutting busbar.
- ◆ **Punching:** punching precisely, fewer glitches, depth in 70mm. The max. punching capacity - copper and aluminum: D20.5x10mm, iron: D20.5x8mm.
- ◆ **Flat bending:** completes a 90-degree bending at once. Has an angle scale that allows user to easily control and bend a wanted angle. The max. bending capacity: 200X10mm.
- ◆ **Vertical bending:** completes a 90-degree bending at once. Has many kinds of templates that allows bending busbar in different thicknesses. The max. bending capacity: 125X12.5mm.
- ◆ **Cutting:** a V-type cutter makes the cutting edge smoother without a notch. The max. cutting capacity: 150x10mm.
- ◆ Contains an auto-hydraulic pump. The output is 700 kgf/cm<sup>2</sup> (10000psi).

Busbar Thickness (mm)	Busbar Width (mm)	Bending Angle	Bending Radius (mm)
6	40/50/60	90	140
8	80	90	140
8	100	90	140
10	80	90	160
10	100	90	160
10	125	90	160
12.5	125	90	160

Item	Punching Capacity (mm)	Bending Capacity (mm)	Cutting Capacity (mm)
MPCB-301	Copper, Aluminum D20.5x10/ IronD20.5x8 Standard sizes:3/8"(10.5), 1/2"(13.8),5/8"(17),3/4"(20.5)	Copper, Aluminum 150x10	Copper, Aluminum 150x10
MPCB-401	Copper, Aluminum D20.5x10/ IronD20.5x8 Standard sizes:3/8"(10.5), 1/2"(13.8),5/8"(17),3/4"(20.5)	Flat bender: Copper, Aluminum:125x12.5 Vertical bender: Copper, Aluminum:125x12.5	Copper, Aluminum 150x10