

When processing a number of construction projects, builders need to carry a variety of tools for the construction. This causes builders trouble for carrying them around. This multi-function series is smaller and lighter, easier to change molds, faster operation. It minimizes the inconvenience during the construction.



REC-5250M

Battery-Powered Type

- ◆ The EHV rechargeable host and the DC-driver-motor-hydraulic pump drive high tonnage output. The output pressure: 700kg/cm² (10000psi) – Has two-stage inlet, high and low pressures.
- ◆ Easy to operate, lightweight and easy to carry, high mobility. Suitable to use in fast-rescue construction sites.
- ◆ The hydraulic system is designed with an overload protection device, which is much secured, not easy to damage.
- ◆ The multi-functional combination makes investment low pay high.
- ◆ The head is made of high-strength alloy steel, which can be rotated 180 degrees to coordinate with various angles.

Item	Output (Ton)	(VDC)	Weight (Kg)	Remark
REC-5250M	10	14.4	4.3	Accessory Battery x2 Charger x1

CPO-5250M

Directly Type

- ◆ The Integrated hydraulic crimping EHV machine has two-stage, high and low pressures, oil output by squeezing manually. The maximum output pressure: 700kg/cm² (10000psi).
- ◆ Easy to operate, lightweight and easy to carry. Suitable to use on aerial pole works.
- ◆ The hydraulic system is designed with an overload protection device, which is much secured, not easy to damage.
- ◆ The multi-functional combination makes investment low pay high.
- ◆ The head is made of high-strength alloy steel, which can be rotated 180 degrees to coordinate with various angles.

Item	Output (Ton)	Weight (Kg)
CPO-5250M	10	3.8

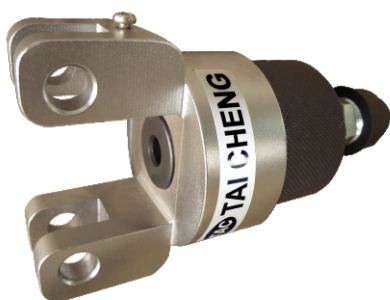


CO-5250M

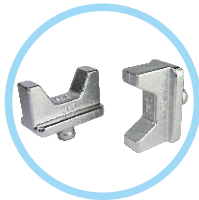
Separate Type

- ◆ A single-loop crimping tool has lightweight, easy to carry and operate.
- ◆ It is mainly made of high-carbon steel, which had hardness heat treatment that has high tension resistance, not easy deformation.
- ◆ The multi-functional combination makes investment low pay high.
- ◆ Need to coordinate with hydraulic pump (power pump: CTE-25AS, hand pump: CP-700, or foot pump: CFP-800).

Item	Output (Ton)	Weight (Kg)
CO-5250M	10	2



250AT Series Accessories (Optional Molds):



Dies

250AT-T250 Terminal Compression Set

- ◆ Γ -shaped openings are attached to the mold can be replaced. Hexagonal crimping form. The maximum size: 240mm square crimping.
- ◆ The dies can be customized in any size.

Item	Weight (Kg)	Compressed die sizes (mm ²)	Remark
250AT-T250	3	16,25,35,50,70,95, 120,150,185,240	Hexagon

250AT-30YC Cable Cutting Set

- ◆ Blades are made of special alloy steel. It is suitable to use on cutting soft wire and communications cables.
- ◆ Maximum cutting opening: D30mm (240mm).

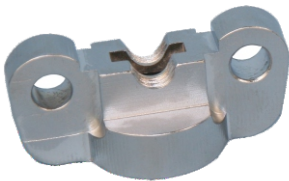
Item	Weight (Kg)	Cutting Capacity(mm)	
		Copper Aluminum Strand	Telecom Cable
250AT-30YC	1.55	D30	D30



250AT-13WT Screw Stick Cutting Set

- ◆ The screw stick cutting surface is smooth without glitches. Nut can be easily tighten.
- ◆ Suitable for mild steel (SS). With two sizes of blades: W 3/8" and W 1/2" for optional.

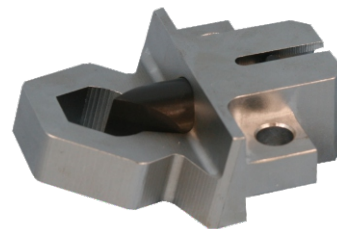
Item	Weight (Kg)	Cutting Capacity (mm)
250AT-13WT	0.96	Optional: W 3/8" & W 1/2"



250AT-M24 Screw Nut Cutting Set

- ◆ The blade is made of alloy steel. Can cut off all kinds of nuts which do not hardness.
- ◆ Applicable range of cutting bolt M12 ~ M16. A/F 19-24.

Item	Weight (Kg)	Bolt Range (mm)	Hexagon Nut Range (mm)
250AT-M24	1.15	M12-M16	A/F19-24



250AT-25SU Stainless Steel Tube Compression Set

- ◆ Dies are replaceable. Die sizes: 13SU(1/2"), 20SU(3/4"), 25SU(1").

Item	Weight (Kg)	Applicable Tube Diam. (mm)
250AT-25SU	1.45	13SU(1/2").20SU(3/4"). 25SU(1")



Dies

Battery-powered hydraulic tool is a trend in the future. It can save the traditional human consumption as well as improve efficiency and rescue speed. Driven the motor of hydraulic pump by using the DC voltage 14.4V, high and low two-section hat oil inlet fast, can easily operate at overhead line operations and improve efficiency. The outer shell is made of reinforced PVC material, not easy to damage.



Dies

REC-250C

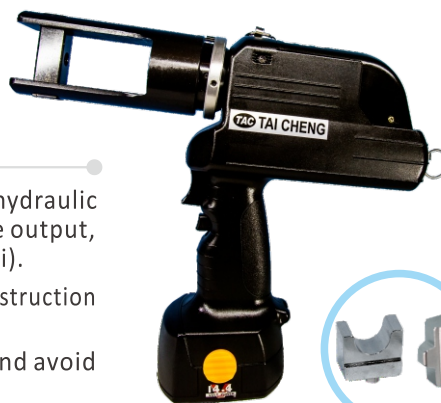
Battery-Powered Hydraulic Compression Tool

- ◆ EHV rechargeable crimping machine, driving the motor of hydraulic pump by using the DC voltage 14.4V and drive high tonnage output, maximum output pressure can up to 700kgf / cm² (10000psi).
- ◆ Use-friendly, lightweight, portable, suitable for fast rescue construction site.
- ◆ Safe valve designed in the hydraulic system, can protect and avoid over-loading automatically.
- ◆ Accessory dies can be replaced, hexagon compression type, compression maximum size up to 240mm².
- ◆ C-shaped and 180° rotatable head part, can make use of variety of angles.
- ◆ Able to customize dies in any sizes.

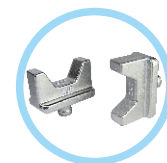
REC-250H

Battery-Powered Hydraulic Compression Tool

- ◆ EHV rechargeable crimping machine, driving the motor of hydraulic pump by using the DC voltage 14.4V and drive high tonnage output, maximum output pressure can up to 700kgf / cm² (10000psi).
- ◆ Use-friendly, lightweight, portable, suitable for fast rescue construction site.
- ◆ Safe valve designed in the hydraulic system, can protect and avoid over-loading automatically.
- ◆ Accessory dies can be replaced, hexagon compression type, compression maximum size up to 240mm².
- ◆ H-shaped and 180° rotatable head part, can make use of variety of angles.
- ◆ Able to customize dies in any sizes.



Point Dies



Hexagon Dies



Item	Output (Ton)	Weight (Kg)	(VDC)	JIS	AWG	DIN	Compressed die sizes (mm ²)	Remark
REC-250C	10	4.5	14.4	250	500	240	16,25,35,50,70,95,120,150,185,240	Hexagon
REC-250H	10	4.3	14.4	250	500	240	16,25,35,50,70,95,120,150,185,240	Point Hexagon
REC-400	12	7	14.4	325	750	400	50,70,95,120,150,185,240,300,400	Hexagon



REC-400

Battery-Powered Hydraulic Compression Tool

- ◆ EHV rechargeable crimping machine, driving the motor of hydraulic pump by using the DC voltage 14.4V and drive high tonnage output, maximum output pressure can up to 700kgf / cm² (10000psi).
- ◆ Use-friendly, lightweight, portable, suitable for fast rescue construction site.
- ◆ Safe valve designed in the hydraulic system, can protect and avoid over-loading automatically.
- ◆ Accessory dies can be replaced, hexagon compression type, compression maximum size up to 400mm².
- ◆ C-shaped and 180° rotatable head part, can make use of variety of angles.
- ◆ Able to customize dies in any sizes.



C-type terminal



H-type terminal



Dies



When the case is too hard to dismantle the rusty nut for replacement, REC-M36 is the special tool for cutting the rusty nut.

REC-M36

Battery-Powered Hydraulic Screw Nut Cutting Tool

- ◆ EHV rechargeable crimping machine, driving the motor of hydraulic pump by using the DC voltage 14.4V and drive high tonnage output, maximum output pressure can up to 700kgf / cm² (10000psi).
- ◆ Use-friendly, lightweight, portable, suitable for fast rescue construction site.
- ◆ Safe valve designed in the hydraulic system, can protect and avoid over-loading automatically.
- ◆ Blade is made of alloy steel, with both long and short blade, east to cut all kinds of nuts.
- ◆ Applicable range to break the bolt: M10 ~ M24, nut: 16 to 36mm (A/F size).
- ◆ Battery basic equipment REC-14x2 pieces and a REC-7300 charger.
- ◆ Available purchasing separately carbonic acid battery 20AH, big power battery lasting work in the air.



Screw nut cutting schematic diagram

Item	Output (Ton)	Weight (Kg)	(VDC)	Bolt Range (mm)	Hexagon Nut Range (mm)
REC-M36	12	5.6	14.4	M10~M24	A/F 16~36



REC-40(Hard Type)

Battery-Powered Hydraulic Cutting Tool

- ◆ EHV rechargeable crimping machine, driving the motor of hydraulic pump by using the DC voltage 14.4V and drive high tonnage output, maximum output pressure can up to 700kgf / cm² (10000psi).
- ◆ Use-friendly, lightweight, portable, suitable for fast rescue construction site.
- ◆ Safe valve designed in the hydraulic system, can protect and avoid over-loading automatically.
- ◆ Suitable for cutting cables, copper and aluminum wire, ACSR, pill rods, cables, telephone lines and other multi-purpose
- ◆ Able to customize blade in any sizes.
- ◆ Maximum cutting capacity: Steel wire D25mm, Pills stick D16mm, Aluminum/Copper D38mm, Phone line/Cable D38mm, ACSR D38mm.

PS: It is suggest that 5 degree blade is better for cutting ACSR, can be more effort-saving. For cable, pill rods, copper and aluminum wire, steel wire and telephone lines, 45 degree blade is better.

BEC-50(Soft Type)

Battery-Powered Ratchet Type Hydraulic Cutting Tool

- ◆ Driving the motor by using the DC voltage and using mechanical ratchet shear to drive the tool cutting.
- ◆ Fast cutting, lightweight and effort-saving.
- ◆ Suitable for cutting copper and aluminum cables. Maximum cutting capacity: Outer diameter-D50mm/630mm².
- ◆ Blade is made of alloy steel, hardness treatment, steady.



Item	Output (Ton)	Weight (Kg)	Cutting Capacity (mm)	Size:LxWxH (mm)
REC-40	12	6.9	Steel wire D25mm, ACSR D38mm Aluminum/Copper D38mm, Telecom Cable D38mm, Pills stick D16mm,	450X70X330
BEC-50	—	2.8	Copper/Aluminum cables D50mm(630mm ²)	105X115X370

We know that the charging type tool is a short period work tools, special for rescuing work. It is hard to use for a long period. In order to solve this problem, we develop and launch the products that can be time-expand.

REC-14+REC-7300

Standard Battery and Charger



REC-14



REC-7300

Battery Item	DC Voltage(V)	Storage Capacity (AH)	Charger Item	Voltage(v)
REC-14	14.4V	1.5AH	REC-7300	110V(220V)

MTB-12+MAD-12

Enhanced Battery and Charger



Battery Item	DC Voltage(V)	Storage Capacity (AH)	Charger Item	Voltage(v)
MTB-12	14.4V	20AH	MAD-12	110V

The hydraulic cutting tool series cuts both hard and soft classes of wires. The hard wire class including: ACSR aluminum wires with steel cores, soft copper-aluminum iron rods, steel strands, steel cables, reinforcing bars, etc. The soft wire class including: copper-aluminum cables, communication cables, and other wires (hard type tools can also cut the soft wires).

CPC-40A(Hard Type)



- ◆ A one-shaped EHV-hydraulic cutting machine uses two-stage manual oil output – high and low voltages. The max. output pressure: 700kgf/cm² (10000psi).
- ◆ Lightweight, easy to carry and operate, suitable for working high above the ground.
- ◆ The special alloy steel blade is made for nicely cutting hard wires without breaking.
- ◆ The operating handle grips are made with FRP materials, so it can be insulated from 20KV voltage for 5 minutes.
- ◆ The max. cutting opening: D38mm.
- ◆ The head part can be rotated upto 180-degree; it is able to coordinate with various angles.

P.S.: It is recommended to use 5-degree blade to cut an ACSR aluminum wire.

CPC-55A(Hard Type)

- ◆ A one-shaped EHV-hydraulic cutting machine uses two-stage manual oil output – high and low voltages. The max. output pressure: 700kgf/cm² (10000psi).
- ◆ Lightweight, easy to carry and operate, suitable for working high above the ground.
- ◆ The special alloy steel blade is made for nicely cutting hard wires without breaking.
- ◆ The operating handle grips are made with FRP materials, so it can be insulated from 20KV voltage for 5 minutes.
- ◆ The max. cutting opening: D55mm.
- ◆ The head part can be rotated upto 180-degree; it is able to coordinate with various angles.



CPC-85A(Soft Type)



- ◆ A one-shaped EHV-hydraulic cutting machine uses two-stage manual oil output – high and low voltages. The max. output pressure: 700kgf/cm² (10000psi).
- ◆ Lightweight, easy to carry and operate, suitable for working high above the ground.
- ◆ The special alloy steel blade is made for nicely cutting hard wires without breaking.
- ◆ The max. cutting opening: D85mm.
- ◆ The head part can be rotated upto 180-degree; it is able to coordinate with various angles.

Item	Output (Ton)	Opening (mm)	Cutting Capacity										Weight (kg)
			Steel Wire(mm)		Round Bar(mm)				Stranded Conduct(mm)			Telecom Cable (mm)	
			6*7	6*12	Soft Copper Bar	Soft Aluminum Bar	Soft Steel Bar	Reinforce bar	ACSR	Copper Aluminum strand	Steel wire strand (1*9)		
CPC-40A	7.1	38	25	25	24	24	16	16	38	38	20	38	5.5
CPC-55A	7.1	55	25	25	24	24	16	18	38	55	20	55	6.5
CPC-85A	5	85	—	—	—	—	—	—	—	28/38	—	85	8.5



CPC-20B(Hard Type)

- ◆ A single-loop cutter tool, lightweight, easy to carry and operate.
- ◆ The special alloy steel blade is made for nicely cutting soft wires without breaking.
- ◆ **The max. cutting opening: D35mm.**
- ◆ Need to coordinate with hydraulic pump (automatic: CTE-25AS, manual: CP-700, or pedal: CFP-800).

CPC-40B(Hard Type)

- ◆ A single-loop cutter tool, lightweight, easy to carry and operate.
- ◆ The special alloy steel blade is made for nicely cutting soft wires without breaking.
- ◆ **The max. cutting opening: D40mm.**
- ◆ Need to coordinate with hydraulic pump (automatic: CTE-25AS, manual: CP-700, or pedal: CFP-800).



P.S.: It is recommended to use 5-degree blade to cut an ACSR aluminum wire.

CPC-55B(Hard Type)



- ◆ A single-loop cutter tool, lightweight, easy to carry and operate.
- ◆ The special alloy steel blade is made for nicely cutting soft wires without breaking.
- ◆ **The max. cutting opening: D55mm.**
- ◆ Need to coordinate with hydraulic pump (automatic: CTE-25AS, manual: CP-700, or pedal: CFP-800).

Item	Output (Ton)	Opening (mm)	Cutting Capacity										Weight (kg)
			Steel Wire(mm)		Round Bar(mm)				Stranded Conduct(mm)			Telecom Cable (mm)	
			6*7	6*12	Soft Copper Bar	Soft Aluminum Bar	Soft Steel Bar	Reinforce bar	ACSR	Copper Aluminum strand	Steel wire strand (1*9)		
CPC-20B	20	35	32	32	32	32	25	28	32	32	32	20	9.5
CPC-40B	7.1	38	25	25	24	24	16	16	38	38	20	38	3.2
CPC-55B	7.1	55	25	25	24	24	16	18	38	55	20	55	4.2



CPC-85B(Soft Type)

- ◆ A single-loop cutter tool, lightweight, easy to carry and operate.
- ◆ The special alloy steel blade is made for nicely cutting soft wires without breaking.
- ◆ The max. cutting opening: D85mm.
- ◆ Need to coordinate with hydraulic pump (automatic: CTE-25AS, manual: CP-700, or pedal: CFP-800).

CPC-100B(Soft Type)

- ◆ A single-loop cutter tool, lightweight, easy to carry and operate.
- ◆ The special alloy steel blade is made for nicely cutting soft wires without breaking.
- ◆ The max. cutting opening: D100mm.
- ◆ Need to coordinate with hydraulic pump (automatic: CTE-25AS, manual: CP-700, or pedal: CFP-800).



CPC-120B(Soft Type)

- ◆ A single-loop cutter tool, lightweight, easy to carry and operate.
- ◆ The special alloy steel blade is made for nicely cutting soft wires without breaking.
- ◆ The max. cutting opening: D120mm.
- ◆ Need to coordinate with hydraulic pump (automatic: CTE-25AS, manual: CP-700, or pedal: CFP-800).

Item	Output (Ton)	Opening (mm)	Cutting Capacity										Weight (kg)
			Steel Wire(mm)		Round Bar(mm)				Stranded Conduct(mm)			Telecom Cable (mm)	
			6*7	6*12	Soft Copper Bar	Soft Aluminum Bar	Soft Steel Bar	Reinforce bar	ACSR	Copper Aluminum strand	Steel wire strand (1*9)		
CPC-85B	5	85	—	—	—	—	—	—	—	28/38	—	85	6
CPC-100B	8.8	100	—	—	—	—	—	—	—	42/46	—	100	15.4
CPC-120B	10.6	120	—	—	—	—	—	—	—	60	—	120	10



CC-32B+A(Soft Type)

- ◆ A single-loop cutter tool, lightweight, easy to carry and operate.
- ◆ The special alloy steel blade is made for nicely cutting soft wires without breaking.
- ◆ The max. cutting opening: D32mm (400mm²).
- ◆ Need to coordinate with hydraulic pump (automatic: CTE-25AS, manual: CP-700, or pedal: CFP-800).

CC-50B+A(Soft Type)

- ◆ A single-loop cutter tool, lightweight, easy to carry and operate.
- ◆ The special alloy steel blade is made for nicely cutting soft wires without breaking.
- ◆ The max. cutting opening: D50mm (630mm²).
- ◆ Need to coordinate with hydraulic pump (automatic: CTE-25AS, manual: CP-700, or pedal: CFP-800).



Item	Output (Ton)	Opening (mm)	Cutting Capacity										Weight (kg)
			Steel Wire(mm)		Round Bar(mm)				Stranded Conduct(mm)			Telecom Cable (mm)	
			6*7	6*12	Soft Copper Bar	Soft Aluminum Bar	Soft Steel Bar	Reinforce bar	ACSR	Copper Aluminum strand	Steel wire strand (1*9)		
CC-32B+A	12	32	—	—	—	—	—	—	—	28	—	30	4.3
CC-50B+A	12	50	—	—	—	—	—	—	—	50	—	50	5.4

CC-22



- ◆ A specialized cutter, for copper-aluminum wires and cables, has lightweight, is easy to carry and cut, the cutting side is neat.
- ◆ The immersed plastic handle is firmly tightened. This design provides users to grip comfortably also has the cut-off position fixed.
- ◆ The arc blade design can effectively grip and cut the cable. The max. cutting capability: 22mm².
- ◆ A special alloy steel blade, has rust treated on its surface, which prevents it from being damaged.

CC-38

- ◆ A specialized cutter, for copper-aluminum wires and cables, has lightweight, is easy to carry and cut, the cutting side is neat.
- ◆ The immersed plastic handle is firmly tightened. This design provides users to grip comfortably also has the cut-off position fixed.
- ◆ The arc blade design can effectively grip and cut the cable. The max. cutting capability: 38mm².
- ◆ A special alloy steel blade, has rust treated on its surface, which prevents it from being damaged.



CC-60



- ◆ A specialized cutter, for copper-aluminum wires and cables, has lightweight, is easy to carry and cut, the cutting side is neat.
- ◆ The immersed plastic handle is firmly tightened. This design provides users to grip comfortably also has the cut-off position fixed.
- ◆ The arc blade design can effectively grip and cut the cable. The max. cutting capability: 60mm².
- ◆ A special alloy steel blade, has rust treated on its surface, which prevents it from being damaged.

Item	Cutting Capacity(mm ²) JIS/DIN	Length(mm)	Weight(g)
CC-22	Copper-aluminum wires 22/25	160	190
CC-38	Copper-aluminum wires 38/50	220	390
CC-60	Copper-aluminum wires 60/60	240	550



CC-100

- ◆ A specialized cutter, for copper-aluminum wires and cables, has lightweight, is easy to carry and cut, the cutting side is neat.
- ◆ The aluminum handle can replace blades, also has the cut-off position fixed.
- ◆ The arc blade design can effectively grip and cut the cable. The max. cutting capability: 100mm².
- ◆ A special alloy steel blade has rust treated on its surface, which prevents it from being damaged. The handle is coated by PVC, which is skidproof, easy to grip.

CC-250

- ◆ A specialized cutter, for copper-aluminum wires and cables, has lightweight, is easy to carry and cut, the cutting side is neat.
- ◆ The aluminum handle can replace blades, also has the cut-off position fixed.
- ◆ The arc blade design can effectively grip and cut the cable. The max. cutting capability: 250mm².
- ◆ A special alloy steel blade has rust treated on its surface, which prevents it from being damaged. The handle is coated by PVC, which is skidproof, easy to grip.



CC-400

CC-500



- ◆ A specialized cutter, for copper-aluminum wires and cables, has lightweight, is easy to carry and cut, the cutting side is neat.
- ◆ The aluminum handle can replace blades, also has the cut-off position fixed.
- ◆ The arc blade design can effectively grip and cut the cable. The max. cutting capability: CC-400: 400mm²; CC-500: 500mm².
- ◆ A special alloy steel blade has rust treated on its surface, which prevents it from being damaged. The handle is coated by PVC, which is skidproof, easy to grip.

Item	Cutting Capacity(mm ²) JIS/DIN	Length(mm)	Weight(g)
CC-100	Copper-aluminum wires 100/120	310	770
CC-250	Copper-aluminum wires 250/300	600	1890
CC-400	Copper-aluminum wires 400/400	690	2285
CC-500	Copper-aluminum wires 500/630	800	3235



CS-325

- ◆ A specialized ratchet-feed-design cutter, for copper-aluminum wires and cables, has lightweight, and able to operate with one hand.
- ◆ The blade can rotate 360 degrees forward and backward to open. It makes users easier to cut in the middle. The max. cutting capability: 400mm².
- ◆ The plastic handle is ergonomically designed for gripping more comfortable and convenient.
- ◆ A special alloy steel blade, has rust treated on its surface, which prevents it from being damaged.



CS-520

- ◆ A specialized ratchet-feed-design cutter, for copper-aluminum wires and cables, has lightweight, and able to operate with one hand.
- ◆ The blade can rotate 360 degrees forward and backward to open. It makes users easier to cut in the middle. The max. cutting capability: 630mm².
- ◆ The plastic handle is ergonomically designed for gripping more comfortable and convenient.
- ◆ A special alloy steel blade, has rust treated on its surface, which prevents it from being damaged.

Item	Cutting Capacity(mm ²) JIS/DIN	Length(mm)	Weight(g)
CS-325	Copper-aluminum wires 325/400	250	643
CS-520	Copper-aluminum wires 500/630	410	1680

MI-60



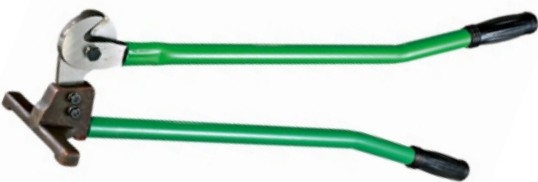
- ◆ A specialized cutter for steel cables, steel strands, and iron bars, has lightweight, is easy to carry and cut, the cutting side is neat.
- ◆ The aluminum handle can replace blades, also has the cut-off position fixed.
- ◆ The arc blade design can effectively grip and cut the cable. The max. cutting capability: iron bar D5mm; steel cable D7mm; copper wire 60mm².
- ◆ A special alloy steel blade has rust treated on its surface, which prevents it from being damaged. The handle is coated by PVC, which is antiskid, easy to grip.

MI-200

- ◆ A specialized cutter for steel cables, steel strands, and iron bars, has lightweight, is easy to carry and cut, the cutting side is neat.
- ◆ The aluminum handle can replace blades, also has the cut-off position fixed.
- ◆ The arc blade design can effectively grip and cut the cable. The max. cutting capability: iron bar D9mm; steel wire D12mm; copper wire 150mm².
- ◆ A special alloy steel blade has rust treated on its surface, which prevents it from being damaged. The handle is coated by PVC, which is antiskid, easy to grip.



MI-625



- ◆ A specialized cutter for steel cables, steel strands, and iron bars, has lightweight, is easy to carry and cut, the cutting side is neat.
- ◆ The arc blade design can effectively grip and cut the cable. The max. cutting capability: steel wire D12.7mm (1/2").
- ◆ A special alloy steel blade has rust treated on its surface, which prevents it from being damaged. The handle is coated by PVC, which is antiskid, easy to grip.

Item	Cutting Capacity	Length(mm)	Weight(g)
MI-60	Iron bar D5mm Steel wire D7mm Copper wire 60mm ²	320	812
MI-200	Iron bar D9mm Steel wire D12mm Copper wire 150mm ²	600	1740
MI-624	Steel wire D12.7mm(1/2")	795	5160



MPC-6

- ◆ A specialized ratchet-feed-design cutter for PVC plastic pipe cutter has lightweight, and able to operate with one hand.
- ◆ The max. cutting capability: D25mm (1").



MPC-42

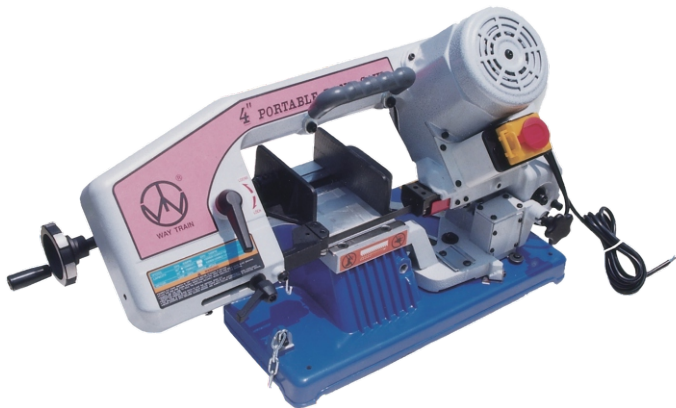
- ◆ A specialized ratchet-feed-design cutter for PVC plastic pipe cutter has lightweight, and able to operate with one hand.
- ◆ The max. cutting capability: D32mm (1 1/4").



KTS-63

- ◆ A specialized ratchet-feed-design cutter for PVC plastic pipe cutter has lightweight, and able to operate with one hand.
- ◆ The max. cutting capability: D63mm.

Item	Cutting Capacity (mm ²)
MP-6	PVC Pipe D25mm(1")
MPC-42	PVC Pipe D32mm(1 1/4")
KTS-63	PVC Pipe D63mm



UE-100S

- ◆ A small multifunctional saw, which is able to cut off cables, iron bars, pipes, tubes, angle irons, aluminum materials, plastic pipes, woods, and other materials.
- ◆ The holder keeps objects steady and balanced, prevents wrinkles on the cutting surface from vibration or oscillation.
- ◆ The alloy saw blade is wearing resistance, high cutting efficiency, and easy to install and replace.
- ◆ Easy to carry, suitable for construction, utilities, machining, and other construction sites use.



Item	Cutting Capacity (mm)		Sawing Belt Size (mm)	Sawing Belt Speed	Motor (HP)	Size:LxWxH (mm)	Weight (kg)
	90°	45°					
UE-100S	○ :100mm □ :100x150mm	○ :85mm □ :85x100mm	1470x13x0.65	50HZ 4P 45MPM	1/2	724X381X458	23