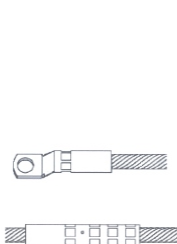




CPO-150S

- ◆ High pressure direct type hydraulic compressed tool, manually operation entering oil by high and low two-stage output, the maximum output pressure is 700kgf / cm² (10000psi).
- ◆ Easy to operate and carry, suitable for high-altitude operations.
- ◆ Accessory dies can be replaced, point compression type, compression maximum size up to 185mm².
- ◆ 180° rotatable head part, can make use of variety of angles.
- ◆ With the overload-protective device.

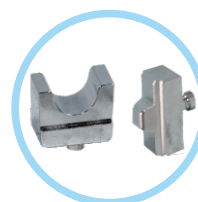


Male die

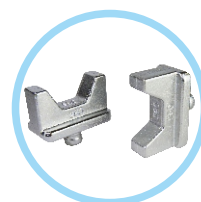


CPO-240

- ◆ High pressure direct type hydraulic compressed tool, manually operation entering oil by high and low two-stage output, the maximum output pressure is 700kgf / cm² (10000psi).
- ◆ Easy to operate and carry, suitable for high-altitude operations.
- ◆ Accessory dies can be replaced, hexagon compression type, compression maximum size up to 240mm².
- ◆ H-shaped and 180° rotatable head part, can make use of variety of angles.
- ◆ With the overload-protective device.
- ◆ Able to customize dies in any sizes.
- ◆ Point type dies are available for purchasing separately.



Point Dies



Hexagon Dies

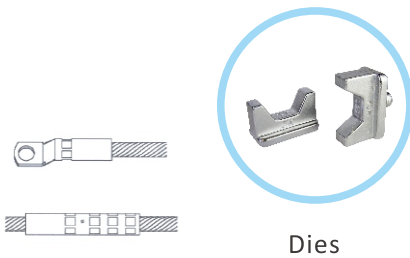


Item	Output (Ton)	Body weight (Kg)	Net weight (Kg)	JIS	AWG	DIN	Compressed die sizes (mm ²)	Remark
CPO-150S	10	4.6	4.7	150	300	185	Male 16-70,95-185 Female 16-25,35,50-70, 95,120,150,185	Point
CPO-240	10	4.2	6.1	250	500	240	16,25,35,50,70,95, 120,150,185,240	Point Hexagon





CYO-240



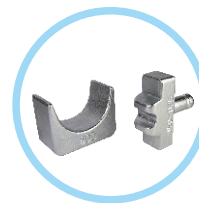
Dies

- ◆ High pressure direct type hydraulic compressed tool, manually operation entering oil by high and low two-stage output, the maximum output pressure is 700kgf / cm² (10000psi).
- ◆ Easy to operate and carry, suitable for high-altitude operations.
- ◆ Accessory dies can be replaced, hexagon compression type, compression maximum size up to 240mm².
- ◆ C-shaped and 180° rotatable head part, can make use of variety of angles.
- ◆ With the overload-protective device.
- ◆ Able to customize dies in any sizes.

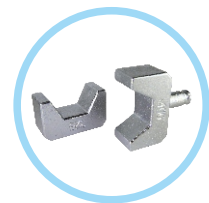
CPO-400A
CPO-400B



- ◆ High pressure direct type hydraulic compressed tool, manually operation entering oil by high and low two-stage output, the maximum output pressure is 700kgf / cm² (10000psi).
- ◆ Easy to operate and carry, suitable for high-altitude operations.
- ◆ Accessory dies can be replaced, point and hexagon compression type, compression maximum size up to 400mm².
- ◆ 11-shaped and 180° rotatable head part, can make use of variety of angles.
- ◆ With the overload-protective device.
- ◆ Able to customize dies in any sizes.



CPO-400A Dies



CPO-400B Dies



Item	Output (Ton)	Body weight (Kg)	Net weight (Kg)	JIS	AWG	DIN	Compressed die sizes (mm ²)	Remark
CYO-240	10	4.3	6.2	250	500	240	16,25,35,50,70,95,120,150,185,240	Hexagon
CPO-400A	17	7	8.7	325	750	400	Male 16-70,95-150,185-400 Female 16-25,35,50-70,95,120,150,185-240,300,400	Point
CPO-400B	17	7	10.4	325	750	400	16-25,35,50-70,95,120,150,185-240,300,400	Hexagon



Hexagon



Point



CYO-400A(Opening 30mm)

CYO-400C(Opening 38mm)

C-type
terminalH-type
terminal

Dies

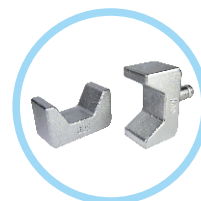


- ◆ High pressure direct type hydraulic compressed tool, manually operation entering oil by high and low two-stage output, the maximum output pressure is 700kgf / cm² (10000psi).
- ◆ Easy to operate and carry, suitable for high-altitude operations.
- ◆ C-shaped head, opening 30mm and 38mm, suitable for crimping brass, copper terminal and C-type, H-type terminals for overhead work; especially outside operation for electricity conductors, power companies and general house wiring crimping.
- ◆ The operating handle grips are FRP material, can insulated 20KV/ 5minutes.
- ◆ Accessory dies can be replaced, hexagon compression type, compression maximum size up to 400mm².
- ◆ 180° rotatable head part, can make use of variety of angles.
- ◆ With the overload-protective device.
- ◆ Able to customize dies in any sizes.



CPO-500

- ◆ High pressure direct type hydraulic compressed tool, manually operation entering oil by high and low two-stage output, the maximum output pressure is 700kgf / cm² (10000psi).
- ◆ Easy to operate and carry, suitable for high-altitude operations.
- ◆ Accessory dies can be replaced, hexagon compression type, compression maximum size up to 500mm².
- ◆ Additional dies for crimping pincer compression tube can be purchase separately.
- ◆ 1-shaped and 180° rotatable head part, can make use of variety of angles.
- ◆ With the overload-protective device.
- ◆ Able to customize dies in any sizes.

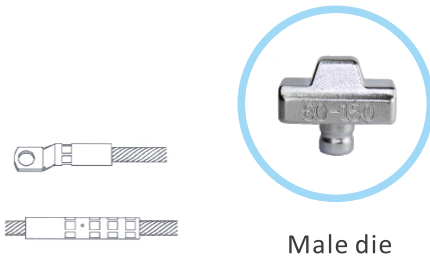


Dies

Item	Output (Ton)	Body weight (Kg)	Net weight (Kg)	JIS	AWG	DIN	Compressed die sizes (mm ²)	Remark
CYO-400A	12	6.2	7.8	325	750	400	50,70,95,120,150,185,240,300,400	Hexagon
CYO-400C	12	7.9	11.5	325	750	400	50,70,95,120,150,185,240,300,400	Hexagon
CPO-500	20	7.5	12	500	1000	500	35,50,70,95,120,150,185,240,300,400,500	Hexagon



CPO-150B



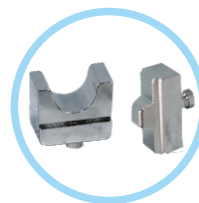
Male die

- ◆ Single-action compression tool, lightweight, easy to operate and carry.
- ◆ The material of tool made of high carbon steel, heat treatment, not easily deformed.
- ◆ Accessory dies can be replaced, point compression type, compression maximum size up to 185mm².
- ◆ Need to coordinate with hydraulic pump (power pump: CTE-25AS, hand pump: CP-700, or foot pump: CFP-800).

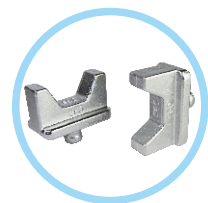


CPO-240B

- ◆ Single-action compression tool, lightweight, easy to operate and carry.
- ◆ The material of tool made of high carbon steel, heat treatment, not easily deformed.
- ◆ H-shaped head, accessory dies can be replaced, hexagon compression type, compression maximum size up to 240mm².
- ◆ Need to coordinate with hydraulic pump (power pump: CTE-25AS, hand pump: CP-700, or foot pump: CFP-800).
- ◆ Able to customize dies in any sizes.



Point Dies



Hexagon Dies



Item	Output (Ton)	Body weight (Kg)	Net weight (Kg)	JIS	AWG	DIN	Compressed die sizes (mm ²)	Remark
CPO-150B	10	3.3	3.4	150	300	185	Male 16-70,95-185 Female 16-25,35,50-70, 95,120,150,185	Point
CPO-240B	10	3.4	4.7	250	500	240	16,25,35,50,70,95, 120,150,185,240	Point Hexagon



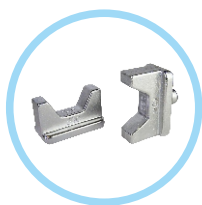
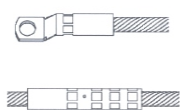
Hexagon



Point



CYO-240B



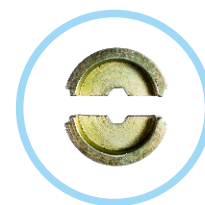
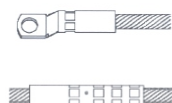
Dies

- ◆ Single-action compression tool, lightweight, easy to operate and carry.
- ◆ The material of tool made of high carbon steel, heat treatment, not easily deformed.
- ◆ C-shaped head, accessory dies can be replaced, hexagon compression type, compression maximum size up to 240mm².
- ◆ Need to coordinate with hydraulic pump (power pump: CTE-25AS, hand pump: CP-700, or foot pump: CFP-800).
- ◆ Able to customize dies in any sizes.



FH-240B

- ◆ Single-action compression tool, lightweight, easy to operate and carry.
- ◆ The material of tool made of high carbon steel, heat treatment, not easily deformed.
- ◆ Liftable opening, accessory dies can be replaced, hexagon compression type, compression maximum size up to 240mm².
- ◆ Need to coordinate with hydraulic pump (power pump: CTE-25AS, hand pump: CP-700, or foot pump: CFP-800).
- ◆ Able to customize dies in any sizes.

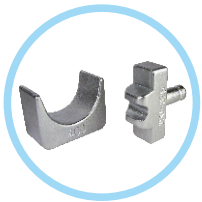


Dies

Item	Output (Ton)	Body weight (Kg)	Net weight (Kg)	JIS	AWG	DIN	Compressed die sizes (mm ²)	Remark
CYO-240B	10	2.7	4.6	250	500	240	16,25,35,50,70,95,120,150,185,240	Hexagon
FH-240B	10	2.5	4.5	250	500	240	16,25,35,50,70,95,120,150,185,240	Hexagon



CO-400A
CO-400B



CO-400A Dies



CO-400B Dies



- ◆ Single-action compression tool, lightweight, easy to operate and carry.
- ◆ The material of tool made of high carbon steel, heat treatment, not easily deformed.
- ◆ **U-shaped head, accessory dies can be replaced, point and hexagon compression type, compression maximum size up to 400mm².**
- ◆ Need to coordinate with hydraulic pump (power pump: CTE-25AS, hand pump: CP-700, or foot pump: CFP-800).
- ◆ Able to customize dies in any sizes.



CYO-400B(Opening 30mm)
CYO-400D(Opening 38mm)

- ◆ Single-action compression tool, lightweight, easy to operate and carry.
- ◆ The material of tool made of high carbon steel, heat treatment, not easily deformed.
- ◆ **C-shaped head, opening 30mm and 38mm, accessory dies can be replaced, hexagon compression type, compression maximum size up to 400mm². Also suitable for crimping brass, copper terminal and C-type, H-type terminals for overhead work; especially outside operation for electricity conductors, power companies and general house wiring crimping.**
- ◆ Need to coordinate with hydraulic pump (power pump: CTE-25AS, hand pump: CP-700, or foot pump: CFP-800).
- ◆ Able to customize dies in any sizes.



C-type
terminal



H-type
terminal



Dies



Item	Output (Ton)	Body weight (Kg)	Net weight (Kg)	JIS	AWG	DIN	Compressed die sizes (mm ²)	Remark
CO-400A	17	4.3	6	325	750	400	Male 16-70,95-150,185-400 Female 16-25,35,50-70,95,120,150,185-240,300,400	Point
CO-400B	17	4.3	7.7	325	750	400	16-25,35,50-70,95,120,150,185-240,300,400	Hexagon
CYO-400B	12	4.7	6.3	325	750	400	50,70,95,120,150,185,240,300,400	Hexagon
CYO-400D	12	5.6	8.5	325	750	400	50,70,95,120,150,185,240,300,400	Hexagon



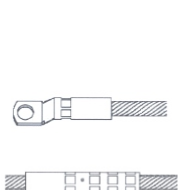
Hexagon



Point



CO-500B

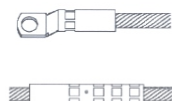


Dies

- ◆ Single-action compression tool, lightweight, easy to operate and carry.
- ◆ The material of tool made of high carbon steel, heat treatment, not easily deformed.
- ◆ **∏-shaped head, accessory dies can be replaced, hexagon compression type, compression maximum size up to 500mm².**
- ◆ Need to coordinate with hydraulic pump (power pump: CTE-25AS, hand pump: CP-700, or foot pump: CFP-800).
- ◆ Able to customize dies in any sizes. (which can be pressed aluminum cable sleeve).

CO-630A

- ◆ Single-action compression tool, lightweight, easy to operate and carry.
- ◆ The material of tool made of high carbon steel, heat treatment, not easily deformed.
- ◆ **∏-shaped head, accessory dies can be replaced, hexagon compression type, compression maximum size up to 630mm².**
- ◆ Need to coordinate with hydraulic pump (power pump: CTE-25AS, hand pump: CP-700, or foot pump: CFP-800).
- ◆ Able to customize dies in any sizes. (which can be pressed aluminum cable sleeve).
- ◆ **Accessory a set of standard die, additional dies can be purchased separately.**



Dies

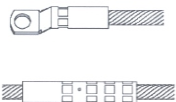
Item	Output (Ton)	Body weight (Kg)	Net weight (Kg)	JIS	AWG	DIN	Compressed die sizes (mm ²)	Remark
CO-500B	20	6.9	10.2	400	100	500	70,95,120-150, 185,240,300,400,500	Hexagon
CO-630A	35	15.4	17.1	500	1200	630	70-100,120-150, 185,240,300,400,500,630	Hexagon



Hexagon



Point



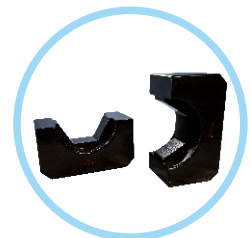
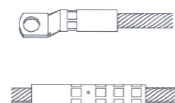
Dies

CO-630B

- ◆ Single-action compression tool, lightweight, easy to operate and carry.
- ◆ The material of tool made of high carbon steel, heat treatment, not easily deformed.
- ◆ U-shaped head, accessory dies can be replaced, hexagon compression type, compression maximum size up to 630mm².
- ◆ Need to coordinate with hydraulic pump (power pump: CTE-25AS, hand pump: CP-700, or foot pump: CFP-800).
- ◆ Able to customize dies in any sizes. (which can be pressed aluminum cable sleeve).
- ◆ Accessory a set of standard die, additional dies can be purchased separately.

CO-1000

- ◆ Single-action compression tool, lightweight, easy to operate and carry.
- ◆ The material of tool made of high carbon steel, heat treatment, not easily deformed.
- ◆ 1-shaped head, 30mm opening accessory dies can be replaced, hexagon compression type, compression maximum size up to 1000mm².
- ◆ Need to coordinate with hydraulic pump (power pump: CTE-25AS, hand pump: CP-700, or foot pump: CFP-800).
- ◆ Able to customize dies in any sizes. (which can be pressed aluminum cable sleeve).
- ◆ Accessory a set of standard die, additional dies can be purchased separately.



Dies

Item	Output (Ton)	Body weight (Kg)	Net weight (Kg)	JIS	AWG	DIN	Compressed die sizes (mm ²)	Remark
CO-630B	30	9.9	10.1	500	1200	630	150,185,240, 300,400,500,630	Hexagon
CO-1000	55	28.3	31.3	1000	2000	1000	240,300,400, 500,630,800,1000	Hexagon



Hexagon



Point

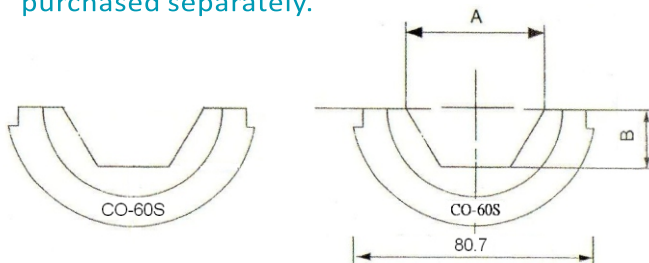
Large Tonnage Series

Suitable for transmission and distribution projects for 60Tons ~ 200Tons terminal wire connectors, clamp, steel and aluminum casing, cable and other multi-purpose, also applies to 110 ~ 1000KV EHV overhead lines or underground cable crimping use.



CO-60S

- ◆ Single-action compression tool, large tonnage, simple, available for widely compression function.
- ◆ The material of tool made of high carbon steel, heat treatment, not easily deformed.
- ◆ Hexagonal crimping, crimping range refer the parameters.
- ◆ Need to coordinate with hydraulic pump (power pump: CTE-25AS, hand pump: CP-700-2A).
- ◆ Able to customize dies in any sizes.
- ◆ Accessory a set of standard die, additional dies can be purchased separately.



CO-60S

Die Mold	A (mm)	B (mm)	C (mm)
6010SH	15.9	6.9	32
6012SH	19.3	8.4	23.9
6014SH	22.2	9.5	25.4
6016SH	25.4	10.9	16.8
6018SH	28.6	12.3	15.2
6020SH	31.7	13.4	19
6075SH	10.7	4.6	35.1
6076SH	12.7	5.5	28.4
6020AH	31.8	13.5	59.7
6024AH	38.1	16.3	49.5
6027AH	42.8	18.2	43.2
6030AH	47.6	20.2	57
6034AH	54	23	46.2
6036AH	57.2	24.2	44.5
6074AH	20.8	8.7	62
6075AH	25.4	10.6	62
6076AH	30.2	12.6	61.2

Steel Sleeve

Die Mold	Applicable wire
6010SH	ACSR300(45/7),795(45/7),336.4(26/7)
6012SH	ACSR300(24/7),477(26/7),3/8"S.G.W.
6014SH	ACSR300(54/7),795(26/7),636(26/7),7NO.8A.W.
6075SH	ACSR300(18/1),477(18/1),4/0(6/1)
6076SH	ACSR300(26/7)
6020SH	19NO.9A.W.

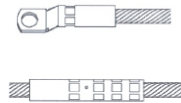
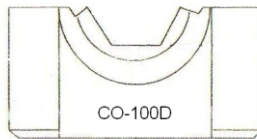
Aluminum Sleeve

Die Mold	Applicable wire
6020AH	ACSR336.4(26/7),AAC477(19),φ3/8"AW
6024AH	ACSR477(26/7),ACC636(36)
6027AH	ACSR636(24/7,26/7),7NO.8A.W.
6030AH	ACSR954(54/7,45/7),795(26/7)19NO.8AW,ACC954(37)
6034AH	AAC1272(61)
6036AH	AAC1431(61),ACSR1272(45/7)
6075AH	ACSR4/0(6/1)
6076AH	ACSR300(26/7)



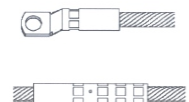
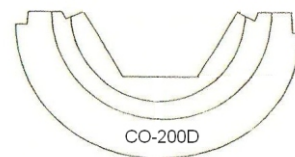
CO-100D

- ◆ Double- action compression tool, large-tonnage, oil return fast, easy to operate, available for widely compression function.
- ◆ The material of tool made of high carbon steel, heat treatment, not easily deformed.
- ◆ Hexagonal crimping, crimping range refer the parameters.
- ◆ Need to coordinate with hydraulic pump (power pump: CTE-25AD, hand pump: CP-700-2A-D).
- ◆ Able to customize dies in any sizes.
- ◆ Accessory a set of standard die, additional dies can be purchased separately.



CO-200D

- ◆ Double- action compression tool, large-tonnage, oil return fast, easy to operate, available for widely compression function.
- ◆ The material of tool made of high carbon steel, heat treatment, not easily deformed.
- ◆ Hexagonal crimping, crimping range refer the parameters.
- ◆ Need to coordinate with hydraulic pump (power pump: CTE-25AD, hand pump: CP-700-2A-D).
- ◆ Able to customize dies in any sizes.
- ◆ Accessory a set of standard die, additional dies can be purchased separately.

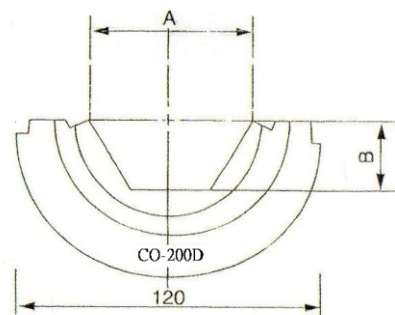
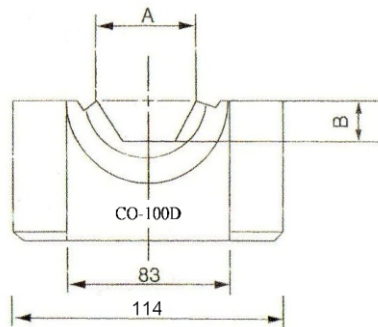
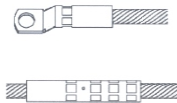


Selection Method for Large Tonnage Die

As the principle the outer diameter of crimp sleeve equal to the diagonal dimension die" to buy the die. This data is for reference only, specific size specifications subject to actual measured data.

Item	Output (Ton)	Compressed die sleeve sizes (mm ²)	Stroke (mm)	Oil Storage (cc)	Weight (Kg)	Remark
CO-60S	60	Copper D55 / Aluminum D55 / Steel D30	38.5	283	21.4	Hexagon
CO-100D	100	Copper D64 / Aluminum D71 / Steel D32	22	315	39.5	Hexagon
CO-200D	200	Copper D86 / Aluminum D100 / Steel D50	39	1130	104	Hexagon





CO-100D/200D

Steel Sleeve

Die Mold	A (mm)	B (mm)	C 100D/200D (mm)
G8.5	8.5	3.7	50/70
G10	10	4.3	45/70
G12	12	5.2	40/70
G16	16	6.9	40/70
G18	18	7.8	35/70
G20	20	8.7	35/70
G22	22	9.5	30/70
G23	23	10	30/60
G24	24	10.4	30/60
G26	26	11.3	30/60
G28	28	12.1	28/60
G30	30	12.99	25/60
G32	32	13.9	25/60
G44	44	19.1	--/35
G50	50	21.7	--/30

Aluminum Sleeve

Die Mold	A (mm)	B (mm)	C 100D/200D (mm)
L22	22	9.5	75/128
L26	26	11.3	75/128
L30	30	12.5	75/128
L34	34	14.2	75/128
L38	38	16	75/128
L42	42	18.2	75/128
L44	44	18.6	75/128
L48	48	20.8	75/128
L52	52	22.5	75/128
L60	60	26	75/128
L65	65	28.2	75/128
L68	68	29.4	75/128
L71	71	30.7	75/128
L76	76	32.9	--/128
L90	90	39	--/128
L100	100	43.3	--/128

Copper Sleeve

Die Mold	A (mm)	B (mm)	C 100D/200D (mm)
C14	14	6.1	60/--
C17	17	7.4	60/--
C19	19	8.2	60/--
C23	23	10	60/--
C26	26	11.3	60/--
C29	29	12.6	60/--
C32	32	13.9	60/--
C36	36	15.6	55/--
C38	38	16.5	55/--
C42	42	18.2	55/--
C47	47	20.4	50/--
C50	50	21.7	50/--

Die Mold	A (mm)	B (mm)	C 100D/200D (mm)
C51	51	22	50/--
C54	54	23.4	50/--
C56	56	24.3	40/--
C57	57	24.7	40/--
C63	63	27.3	--/70
C64	64	27.7	35/--
C68	68	29.4	--/70
C73	73	31.6	--/65
C78	78	33.8	--/64
C85	85	36.8	--/60
C86	86	37.23	--/60



C-type terminal

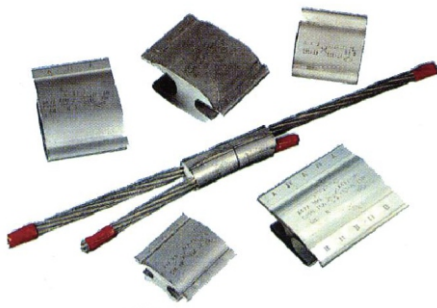


12 Tons Compression Dies

CYO-400A/CYO-400C
CYO-400B/CYO-400D

- ◆ Taiwan Power Company projects dedicated C-type terminal, 12Ton hydraulic compression tool.
- ◆ Suitable for connecting branch line, the middle line and the ground with copper links, with the C-type copper terminals, tube fittings.

H-type terminal



Item No.	Specification	Copper Sleeve
UBG	14 8 22 8	φ1
UBG	14 38 22 22	φ1
UO	35 35-50 50 60	φ1
UO	35 25 50 35	φ1
UO	60 8 60 38	φ1
UO	14 14 38 38	φH2
UD3	60 22 125 60	φH2
UD3	60 60 100 100	φH2
UD4	100 125 150 150	φ1
UD4	60 125 60 150	φ1
UN	200 200 250 250	φ1
UN	60 250 100 250	φ1
UD4	150 150 200 200	φ1
UD4	22 200 60 200	φ1

Die Mold for overhead	Applicable tension crimping sleeve
B72AH	—
B73AH	AL sleeve #2AAC
B74AH	AL sleeve 2/0AAC
B75AH	AL sleeve 4/0AAC
B76AH	AL sleeve 300AAC
B20AH	AL sleeve 477AAC
CU22	CO sleeve 22HDC
CU38	CO sleeve 38HDC
CU60	CO sleeve 60HDC
CU100	CO sleeve 100HDC
B72SH	ST sleeve #4ACSR
B73SH	ST sleeve #2ACSR
B74SH	ST sleeve 2/0ACSR
B75SH	ST sleeve 4/0ACSR
B76SH	ST sleeve 300ACSR
UBG	H sleeve #6-#8
UD	—
UD	—
UN	—
UN	—

Die Mold for underground	Applicable terminal sleeve
U25RT	#1Cu
U26RT	2/0Cu
U27RT	140McM Cu Single Hole
U29RT	250Cu Double Hole
U34RT	500Cu
UD3	—
UO	—
UO	—

AL sleeve: Aluminum Sleeve
CO sleeve: Copper Sleeve
ST sleeve: Steel Sleeve





MH-02

Mini Bare Terminal Pincer

- ◆ Lightweight, easy to operate and carry, spring type contraction safe effort.
- ◆ Suitable for crimping bare terminal.



CT-10

CT-16

CT-25

Bare Terminal Pincer

- ◆ Lightweight, easy to operate and carry, spring type contraction safe effort.
- ◆ Suitable for crimping bare terminal.

Item	Name	Length (mm)	Weight (g)	Applicable Crimping Range (mm ²)	Remark
MH-02	Mini Bare Terminal Pincer	200	230	1.5,2.5	Point
CT-10	Bare Terminal Pincer	260	420	1.5,2.5,6,10	Point
CT-16	Bare Terminal Pincer	285	500	1.5,2.5,6,10,16	Point
CT-25	Bare Terminal Pincer	340	740	6,10,16,25	Point



MH-38

Bare Terminal Pincer

- ◆ Lightweight, easy to operate and carry, spring type contraction safe effort.
- ◆ Suitable for crimping bare terminal.



MH-38H

Bare Terminal Pincer

- ◆ Lightweight, easy to operate and carry, spring type contraction safe effort.
- ◆ Suitable for crimping bare terminal.

Item	Name	Length (mm)	Weight (g)	Applicable Crimping Range (mm ²)	Remark
MH-38	Bare Terminal Pincer	365	806	6,10,16,25,50	Point
MH-38H	Bare Terminal Pincer	365	820	16,25,35,50	Hexagon



Hexagon



Point



MH-123A

Insulated Terminal Pincer

- ◆ Lightweight, easy to operate and carry, spring type contraction safe effort.
- ◆ Suitable for crimping insulated terminal.



MH-125

Insulated End Terminal Pincer

- ◆ Lightweight, easy to operate and carry, spring type contraction safe effort.
- ◆ Suitable for crimping insulated end terminal.

Item	Name	Length (mm)	Weight (g)	Applicable Crimping Range (mm ²)	Remark
MH-123A	Insulated Terminal Pincer	263	450	1.5,2.5,6	Arc
MH-125	Insulated End Terminal Pincer	285	450	CE1,CE2,CE5	Arc



CT-38

Bare Terminal Pincer

- ◆ Mechanical operations, using a simple bolt adjustment pressing size, easy to carry.
- ◆ Suitable for crimping bare terminal.



CT-80

CT-100

Bare Terminal Pincer

- ◆ Mechanical operations, using a simple bolt adjustment pressing size, easy to carry.
- ◆ Suitable for crimping bare terminal.

Item	Name	Length (mm)	Weight (g)	Applicable Crimping Range (mm ²)	Remark
CT-38	Bare Terminal Pincer	540	2420	10,16,25,50	Point
CT-80	Bare Terminal Pincer	670	4940	16,25,35,50,70,95	Point
CT-100	Bare Terminal Pincer	670	4940	25,35,50,70,95,120	Point





CYO-80A

Open Terminal Pincer

- ◆ Mechanical operations, using a simple bolt adjustment pressing size, easy to carry.
- ◆ Suitable for crimping bare terminal.

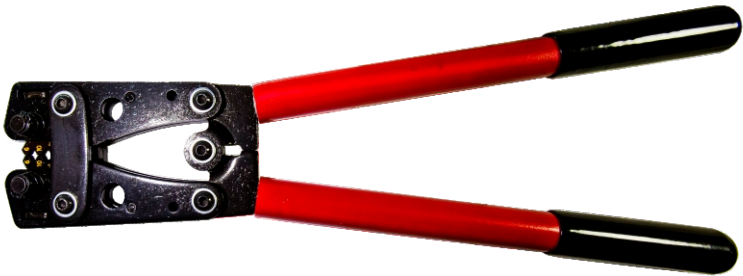


CYO-150

Open Terminal Pincer

- ◆ Mechanical operations, using a simple bolt adjustment pressing size, easy to carry.
- ◆ Suitable for crimping bare terminal.

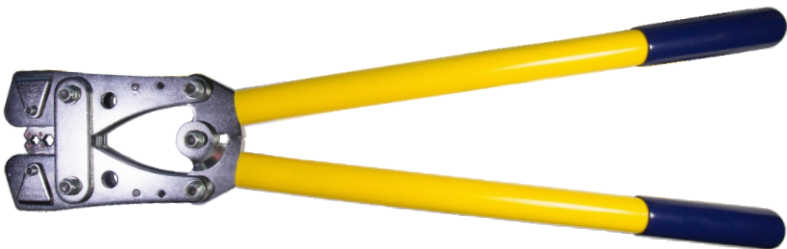
Item	Name	Length (mm)	Weight (g)	Applicable Crimping Range (mm ²)	Remark
CYO-80A	Open Terminal Pincer	570	3160	10,16,25,35,50,70,95,120	Point
CYO-150	Open Terminal Pincer	670	4410	10,16,25,35,50,70,95,120,150	Point



CK-05

Hexagonal Terminal Pincer

- ◆ Mechanical operations, using a simple bolt adjustment pressing size, easy to carry.
- ◆ Suitable for crimping bare terminal.



CK-06
CK-07

Hexagonal Terminal Pincer

- ◆ Mechanical operations, using a simple bolt adjustment pressing size, easy to carry.
- ◆ Suitable for crimping bare terminal.

Item	Name	Length (mm)	Weight (g)	Applicable Crimping Range (mm ²)	Remark
CK-05	Hexagonal Terminal Pincer	400	640	6,10,16,25,35,50,70	Hexagon
CK-06	Hexagonal Terminal Pincer	650	3000	10,16,25,35,50-70,95,120	Hexagon
CK-07	Hexagonal Terminal Pincer	650	3000	25,35,50,70,95,120,150	Hexagon



MH-05S MH-08S MH-14S
MH-22S MH-38S

Effort-Saving Type Crimping Pincer

- ◆ Ultra-effort-saving type !! Use leverage, spring type contraction pressing force can be more easily reduced pressure, light and easy to carry.
- ◆ Suitable for crimping bare terminal.

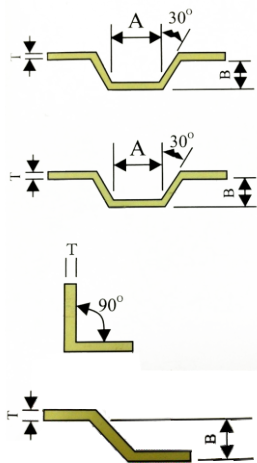


Item	Name	Length (mm)	Weight (g)	Applicable Crimping Range (mm ²)	Remark
MH-05S	Effort-Saving Type Crimping Pincer	176	240	1.5,2.5,6	Point
MH-08S	Effort-Saving Type Crimping Pincer	235	384	1.5,2.5,6,10	Point
MH-14S	Effort-Saving Type Crimping Pincer	243	405	1.5,2.5,6,10,16	Point
MH-22S	Effort-Saving Type Crimping Pincer	330	680	6,10,16,25	Point
MH-38S	Effort-Saving Type Crimping Pincer	334	686	10,16,25,50	Point

CYO-80B

Multifunctional Copper Bending Hand Tool

- ◆ Multifunction copper bending tool with ㄇ-type, L-type, N-type and crimp terminals dies.
- ◆ Replaceable die design, suitable for switchboards, power distribution engineering work, simple operation, easy to carry.
- ◆ BH specifications with copper up to 100A of 3mm, 50A ~ 75A with 2mm copper, under 50A with 1mm copper.



MK-1001 MK-1002 MK-1003 MK-1004 MK-1005

Item	Name	Length (mm)	Weight (g)	Specification of Die	A	B	Thickness (mm)
CYO-80B	Multifunctional Copper Bending Hand Tool	570	3980	MK-1001	15	10	1
				MK-1002	15	10	2
				MK-1003	-	-	under 3
				MK-1004	-	14	under 3
				MK-1005	Terminal 10-50mm ²		



Hexagon



Point